

TESTING
EQUIPMENT

KHARKOVENERGOPRIBOR LTD.



PRODUCT CATALOGUE

 high-voltage
testing equipment

KEP





intertek
Total Quality Assured.

CERTIFICATE OF REGISTRATION

This is to certify that the management system of:

KharkovEnergOPribor Ltd.

Main Site: 9 Generala Momota Street, Kharkov, 61075, Ukraine
 has been registered by Intertek as conforming to the requirements of:

ISO 9001:2015

The management system is applicable to:

Production of testing transformers, high-voltage electric gears, electric signal generators, measuring, controlling and testing apparatus, high-voltage stands, providing installation service, maintenance and repair of issued apparatuses.

Certificate Number:
28110804001

Initial Certification Date:
30 June 2014

Date of Certification Decision:
13 May 2020

Issuing Date:
13 May 2020

Valid Until:
29 June 2023



UKAS
MANAGEMENT
SYSTEMS
014



Intertek



Calin Moldovean
President, Business Assurance
Intertek Certification Limited, 110A Victory
Park, Victory Road, Derby DE24 8ZF, United
Kingdom
Intertek Certification Limited is a
UKAS accredited body under
schedule of accreditation no. 014.





NATIONAL ACCREDITATION AGENCY OF UKRAINE
NATIONAL ACCREDITATION BODY OF UKRAINE

ACCREDITATION CERTIFICATE

Registered
on April 22, 2019
No. 40040
valid until April 21, 2024

Date of the Initial Accreditation: **April 22, 2014**

NATIONAL ACCREDITATION AGENCY OF UKRAINE
BY THIS CONFIRMS THE COMPETENCE OF

**Calibration laboratory
of «KHARKOVENERGOPRIBOR» LIMITED**
61075, Kharkiv, Generala Momota str., 9

3 2 8 6 8 9 7 0
(EDRPOU Code)

IN COMPLIANCE WITH THE REQUIREMENTS OF DSTU ISO/IEC 17025:2017
(ISO/IEC 17025:2017) IN THE SCOPE OF:

calibration by the following types of measurement: EM - electricity and magnetism

The scope of accreditation is determined by the Annex to this Certificate.
The Annex is an integral part of this Certificate and consists of 2 pages.

Acting Chairman  Valerii Krasiuk

Translation dated 20.05.2019
18/7 Generala Almazova Street, Kyiv, 01133
Registered in the logbook under No. 1049 A

NAAU is a signatory to: 1) EA BLA in the scopes of "Testing", "Calibration", "Product certification", "Certification of persons", "Management systems certification" and "Inspection"; 2) ILAC-MRA in the scopes of "Testing", "Calibration" and "Inspection"; 3) IAF MLA in the scopes of "Product certification", "Certification of persons", "Management systems certification".

CONTENTS

CABLE TEST AND FAULT LOCATION SYSTEMS

CABLE TEST VANS

- ETL-40 4
- ETL-10M 5
- ETL-35K 6
- ETL-35 7

MOBILE CABLE FAULT LOCATION SYSTEMS

- SWG series 12

TIME-DOMAIN REFLECTOMETERS

- RIF-9 16

LOW FREQUENCY GENERATORS

- LFG series 20

SURGE RECEIVERS AND CABLE LOCATORS

- P-900 24
- PT-14 25

HV CABLES

- Cables & wires 26

HIGH-VOLTAGE TESTERS

AC/DC HIPOT TESTERS

- HVT series 30
- HVTS-HP series 31

VLf TESTERS

- VLF-60 34

ELECTRICAL PROTECTIVE EQUIPMENT TEST SYSTEMS

- CBC-M series 38
- CBC-C series 39
- CBC-12C 40

PRIMARY CURRENT INJECTION TESTERS

CIRCUIT BREAKER TESTERS

- UPA series 44

INSULATING OIL TESTERS

OIL BREAKDOWN TESTERS

- OLT series 48
- C series 49

OIL DIELECTRIC DISSIPATION FACTOR METERS

- TANGENT-3M 52
- YAOI-3 53
- YAPI-3 53

RESONANT TEST SYSTEMS

RESONANT TESTERS

- UIG series 56

CABLE TEST VANS

A test van is a set of test and measuring apparatus mounted in a vehicle and used for testing cable lines and substation equipment as well as to quickly locate faults in power cables accessible by a specialised car.

The capabilities of test vans are determined by their equipment. We offer our customers a choice of cable test vans which are designed for testing and locating faults in underground power cables, and test vans for comprehensive maintenance of substation equipment.

In order to obtain the optimal solution, our customers enjoy a great deal of flexibility when choosing the vehicle base for their test van as well as the equipment that will be mounted in it.

2

■ CABLE TEST AND FAULT LOCATION SYSTEMS ■



ETL-40



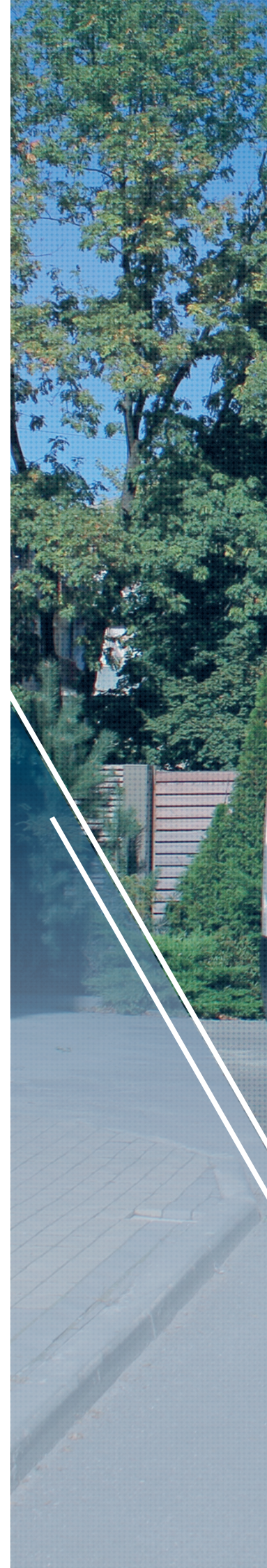
ETL-10M



ETL-35K



ETL-35





ETL-40

▪ CABLE TEST VAN ▪



ETL-40 is a fully equipped van-mounted cable test and fault location system which allows to test cable insulation with DC voltage up to 40 kV and is equipped with a 1 A burn module. The system is also capable of pre-locating cable faults with an aid of a built-in time-domain reflectometer and pinpointing faults with an acoustic method.

Centralised digital control facilitates an easy operation while multi-level safety and protection ensures complete operator safety.

■ Features

- DC testing up to 40 kV with high output current up to 300 mA
- Fault conditioning (burning) with up to 1 A current
- Built-in reflectometer
- Surge generator up to 2000 J
- Centralised microprocessor-based control



ETL-10M

▪ CABLE TEST VAN ▪



ETL-10M is a cable test van with a three-phase connection method designed for testing cable insulation with DC voltage up to 60 kV and testing other electrical objects with AC voltage up to 50 kV at industrial frequency.

The system also allows to pre-locate cable faults with an aid of a built-in time-domain reflectometer and pinpoint faults with an inductive and acoustic methods.

■ Features

- Three-phase connection
- DC testing up to 60 kV and AC testing up to 50 kV
- Fault conditioning (burning) with up to 12 A current
- Built-in reflectometer
- Surge generator up to 2000 J
- Powerful 200 V·A low frequency generator



ETL-35K

■ CABLE AND SUBSTATION EQUIPMENT TEST VAN ■



ETL-35K is a versatile multipurpose cable and substation test van with three-phase connection to electrical objects. ETL-35K allows to test cable insulation with DC voltage up to 60 kV, detect very small leakage currents during surge arrestors testing, conduct high-voltage testing with AC voltage up to 100 kV at industrial frequency, trace underground utilities, pre-locate and pinpoint cable faults, and measure the capacitance and tangent delta of various electrical objects at industrial frequency.

ETL-35K is fitted with a collection of traditional and modern safety systems which ensure the comprehensive operator protection.

■ Features

- Three-phase connection
- DC testing up to 60 kV and AC testing up to 50 kV
- Fault conditioning (burning) with up to 12 A current
- Detachable reflectometer
- Surge generator up to 2000 J
- Powerful 200 V•A low frequency generator
- Tangent Delta measurement



ETL-35

▪ SUBSTATION EQUIPMENT TEST VAN ▪



ETL-35 is a van-mounted system designed for testing electrical substation equipment.

Apart from insulation withstand testing with DC voltage up to 60 kV and ability to indicate very small leakage currents, the system can be used for testing various substation objects with small electrical capacitance with AC voltage of up to 100 kV and measuring tangent delta (dielectric dissipation factor) at industrial frequency.

■ Features

- Tangent Delta measurement
- Indication of very small leakage currents during surge arrestors testing
- DC testing up to 60 kV and AC testing up to 100 kV



ETL-40, ETL-10M, ETL-35K, ETL-35

■ CABLE TEST VANS ■

	ETL-40	ETL-10M	ETL-35K	ETL-35
CONNECTION				
Number of phases	1	3	3	1
DC TESTING				
Output voltage adjustment and indication range	0 ... 40 kV	0 ... 60 kV		
Output current indication range	0 ... 300 mA	0 ... 35 mA	0 ... 30 (65) mA	
AC TESTING				
Output voltage adjustment and indication range	–	0 ... 50 kV	0 ... 100 kV	
Output current indication range	–	0 ... 50 mA	0 ... 75 (175) mA	
FAULT CONDITIONING (BURNING)				
Output DC voltage levels, adjustment and indication ranges	0 ... 20 kV	Level 1: 0 ... 0.5 kV Level 2: 0 ... 1 kV Level 3: 0 ... 5 kV Level 4: 0 ... 10 kV Level 5: 0 ... 20 kV		–
Output current (open-circuit run)	up to 1 A	<ul style="list-style-type: none"> ▪ up to 12 A in the 0 ... 0.5 kV range ▪ up to 6 A in all other ranges 		–
FAULT PRE-LOCATION				
Pre-location methods	<ul style="list-style-type: none"> ▪ TDR (impulse reflection method) ▪ ARC / ARC multi-shot (single impulse / multiple impulse arc reflection method) ▪ ICE (impulse current method) ▪ DECAY (voltage decay method) 			–
Fault detection range	0 ... 120 km			–
Distance to fault detection accuracy	0.2 % of selected range			–
Sampling rate	200 MHz			–
Time-domain accuracy	0.01 %			–
Output impedance adjustment range	2 ... 100 Ω, resolution 2 Ω			–
Probe pulse voltage	45 V			–
Probe pulse width adjustment range	10 ns ... 100 μs			–
Gain adjustment range	minus 21 ... + 69 dB			–
Velocity factor adjustment range	0.750 ... 3.000, resolution 0.001			–
Propagation velocity adjustment range	50.0 ... 200.0 m/μs, resolution 0.1 m/μs			–
TRACING AND FAULT PINPOINTING WITH INDUCTIVE METHOD				
Sets of operating frequencies	–	491 / 982 / 8440 Hz 480 / 1450 / 9820 Hz 526 / 1024 / 8928 Hz 1024 / 2048 / 9820 Hz		–
Number of frequencies used simultaneously	–	1 ... 3		–
Modulation type	–	Amplitude		–
Output power adjustment range	–	0 ... 200 V•A		–
Operating modes	–	<ul style="list-style-type: none"> ▪ Continuous ▪ Pulse 		–
Load resistance range within which the maximum output power may be achieved	–	0.5 ... 1000 Ω		–
Load resistance matching	–	Automatic		–

	ETL-40	ETL-10M	ETL-35K	ETL-35
FAULT PINPOINTING WITH ACOUSTIC METHOD				
Surge voltage levels and adjustment ranges		Level 1: 0 ... 8 kV Level 2: 0 ... 16 kV Level 3: 0 ... 32 kV		–
Surge energy at each level		up to 2000 J		–
Surge rate		<ul style="list-style-type: none"> ▪ Single pulse, manually triggered ▪ 4 ... 12 pulses/min, automatic mode 		–
DIELECTRIC DISSIPATION FACTOR (TANGENT DELTA) MEASUREMENT				
Measured values	–		<ul style="list-style-type: none"> ▪ Electrical capacitance ▪ Tan δ ▪ Operating voltage ▪ Operating frequency 	
Measurement modes	–		<ul style="list-style-type: none"> ▪ Direct ▪ Inverted 	
Measurement voltage	–		up to 10 kV	
Maximum load capacitance	–		<ul style="list-style-type: none"> ▪ 64 nF @ 5 kV ▪ 32 nF @ 10 kV 	
SAFETY				
Isolation transformer	4 kV•A	8 kV•A		8 (18) kV•A
Grounding			<ul style="list-style-type: none"> ▪ Protective earthing ▪ Operating grounding ▪ Vehicle chassis potential monitoring ▪ Continuous grounding monitoring system ▪ Automatic discharge device 	
Protection			<ul style="list-style-type: none"> ▪ Overvoltage ▪ Overcurrent ▪ Overheating 	
High voltage presence signalling			<ul style="list-style-type: none"> ▪ Light signalling (optional) ▪ Acoustic signalling (optional) 	
High voltage switch off			<ul style="list-style-type: none"> ▪ EMERGENCY STOP button ▪ Power keylock switch ▪ Open rear door monitoring 	
POWER SUPPLY AND CONSUMPTION				
Mains supply voltage			230 VAC, $\pm 10\%$	
Mains supply frequency			50 Hz	

MOBILE CABLE FAULT LOCATION SYSTEMS

SWG family of systems has been designed as a universal, yet compact solution for servicing underground power cables.

SWG systems contain the modules necessary for the DC cable insulation testing, fault conditioning through burning faulty insulation, and determining the distance to a fault with main pre-location methods. Together with a suitable receiver, SWG family of systems can be used for cable fault pinpointing with an acoustic method.

Transportation and use of these compact systems do not require a specialised vehicle, which makes SWG systems a cost-effective, yet fully functional alternative to cable test vans.



SWG-12



SWG-32





SWG series

■ MOBILE CABLE TEST AND FAULT LOCATION SYSTEMS ■

Mobile SWG-series systems are designed for testing and locating faults in low- and medium-voltage power cables. The SWG system encapsulates all the main components that normally make up a full-fledged cable test van: a time-domain reflectometer, a test/burn module, and a powerful surge generator, while the mobile form factor simplifies the delivery and deployment of the system to the work sites.

The built-in surge generator is at the core of the cable fault pinpointing with an acoustic method. As standard, surge generators in SWG systems are accompanied by a surge levels switch which allows to achieve the maximum surge impulse energy at various voltage levels, providing a high acoustic signal level.

SWG systems are supplied with the detachable reflectometer RIF-9 for added flexibility, ease, and efficiency of the TDR fault pre-location. Using the reflectometer in conjunction with the built-in high-voltage sources enables high-voltage pre-location methods: impulse arc reflection (ARC), impulse current (ICE), and voltage decay (DECAY).



SWG-12

■ Features

- Cable insulation testing with DC voltage up to 12 kV
- Fault conditioning (burning) with current up to 100 mA @ 12 kV
- TDR, ARC / ARC multi-shot, ICE and DECAY pre-location
- Surge generator up to 1100 J with 0 ... 3 / 6 / 12 kV surge levels switch
- Continuous grounding monitoring system



SWG-32

■ Features

- Cable insulation testing with DC voltage up to 32 kV
- Fault conditioning (burning) with current up to 100 mA @ 32 kV
- TDR, ARC / ARC multi-shot, ICE and DECAY pre-location
- Surge generator up to 2000 J with 0 ... 8 / 16 / 32 surge levels switch
- Continuous grounding monitoring system





Mobility



Control panel

	SWG-12	SWG-32
DC TESTING		
Output voltage adjustment and indication range	0 ... 12 kV	0 ... 32 kV
Output current indication range	0 ... 10 mA	
FAULT CONDITIONING (BURNING)		
Output voltage adjustment and indication range	0 ... 12 kV	0 ... 32 kV
Output current (open-circuit run)	up to 100 mA	
FAULT PRE-LOCATION		
Pre-location methods	<ul style="list-style-type: none"> ▪ TDR (impulse reflection method) ▪ ARC / ARC multi-shot (single impulse / multiple impulse arc reflection method) ▪ ICE (impulse current method) ▪ DECAY (voltage decay method) 	
FAULT PINPOINTING WITH ACOUSTIC METHOD		
Surge voltage levels and adjustment ranges	Level 1: 0 ... 3 kV Level 2: 0 ... 6 kV Level 3: 0 ... 12 kV	Level 1: 0 ... 8 kV Level 2: 0 ... 16 kV Level 3: 0 ... 32 kV
Surge energy at each level	up to 1100 J	up to 2000 J
Surge rate	<ul style="list-style-type: none"> ▪ Single pulse, manually triggered ▪ 4 ... 12 pulses/min, automatic mode 	
SAFETY		
Protection	<ul style="list-style-type: none"> ▪ Overvoltage ▪ Overcurrent ▪ Overheating ▪ Continuous grounding monitoring system ▪ Automatic discharge device 	
High voltage switch off	<ul style="list-style-type: none"> ▪ EMERGENCY STOP button ▪ Power keylock switch 	
POWER SUPPLY AND CONSUMPTION		
Mains supply voltage	230 VAC, ± 10 %	
Mains supply frequency	50 Hz (60 Hz option)	
Power consumption	up to 1.0 kV·A	up to 2.0 kV·A
PHYSICAL		
Dimensions, H × W × D	1172 × 775 × 603 mm	1215 × 764 × 675 mm
Total weight	120 kg	185 kg

TIME-DOMAIN REFLECTOMETERS

Time-domain reflectometers are used as standalone devices for determining the length and the velocity factor of electrical cable lines, and as part of cable test vans or mobile cable fault locations systems – for determining the distance to and a type of a fault.

Three-phase reflectometers allow for effective detection of low-resistance faults through a comparative analysis of the cores in the cable line as well as for an automatic determination the nature of the wave resistance inhomogeneities.

The distance to cable faults may be determined using either a low-voltage method of pulse reflectometry (TDR) or advanced high-voltage methods of remote localisation (ARC, ICE, DECAV) with minimal negative effects on the healthy cable insulation.

The additional advantages of reflectometer by KharkovEnergoPribor Ltd. include a convenient touch control, an ability to export measurements data to a PC, and the use of ARC multi-shot technology (aka MIM) which allows to obtain more reliable results when using arc reflection method of pre-location.



RIF-9





pulse

RIF-9

■ TIME-DOMAIN REFLECTOMETER ■

Reflectometer RIF-9 can be connected to up to three cable cores simultaneously and can be used to detect, determine the type of and distance to various inhomogeneities (couplings, branching, etc.), determine the total length (including on drums and in coils) as well as the velocity factor of balanced and unbalanced power cables and communication lines up to 120 km long.

When locating cable faults, the reflectometer RIF-9 can be used standalone for determining the distance to the points of low-resistance cable defects (which formed, for example, naturally or in the process of burning insulation in the damaged area) as well as in conjunction with a high-voltage source or a surge generator for fault pre-location with high-voltage methods of impulse arc reflection, impulse current, and voltage decay.

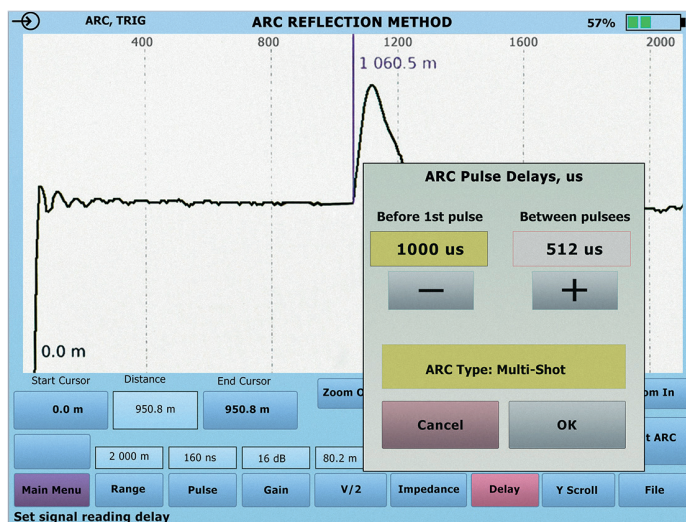


■ Features

- Three-phase connection
- All main pre-location methods – TDR, ARC, ICE, and DECAY
- ARC multi-shot technology
- Fault detection range up to 120 km
- Touch control
- Automatic cursor positioning at fault and cable end



Control panel



Determining the distance to a fault



PRE-LOCATION METHODS

Low-voltage methods	TDR (impulse reflection method)
High-voltage methods	<ul style="list-style-type: none"> ▪ ARC / ARC multi-shot (single impulse / multiple impulse arc reflection method) ▪ ICE (impulse current method) ▪ DECAY (voltage decay method)

SYSTEM PARAMETERS

Number of channels for simultaneous connection to a line	3
Fault detection ranges (for velocity factor 1.50 or $v/2 = 100 \text{ m}/\mu\text{s}$)	0 ... 60 / 120 / 250 / 500 / 1000 / 2000 / 5000 / 10 000 / 20 000 / 50 000 / 120 000 m
Fault detection resolution: <ul style="list-style-type: none"> ▪ for velocity factor 1.50 ($v/2 = 100 \text{ m}/\mu\text{s}$) ▪ for velocity factor 1.87 ($v/2 = 80.2 \text{ m}/\mu\text{s}$) 	0.5 m 0.4 m
Distance to fault detection accuracy	0.2 % of selected range
Sampling rate	200 MHz
Time-domain accuracy	0.01 %
Output impedance adjustment range	2 ... 100 Ω , resolution 2 Ω
Probe pulse parameters: <ul style="list-style-type: none"> ▪ voltage ▪ width adjustment range 	45 V 10 ns ... 100 μs
Gain adjustment range	minus 21 ... + 69 dB
Velocity factor adjustment range	0.750 ... 3.000, resolution 0.001
Propagation velocity ($v/2$) adjustment range	50.0 ... 200.0 $\text{m}/\mu\text{s}$, resolution 0.1 $\text{m}/\mu\text{s}$

INTERFACES

Display	10.4" colour TFT, 800 × 600 px, resistive touch
Connection interfaces	<ul style="list-style-type: none"> ▪ USB-A (user memory stick) ▪ USB-B (PC connection) ▪ RS-485 (service only)
Internal memory: <ul style="list-style-type: none"> ▪ reflectograms with parameters ▪ cable velocity factors 	1000 500

SAFETY

Protection	<ul style="list-style-type: none"> ▪ Protective earthing
Fuses	<ul style="list-style-type: none"> ▪ Battery power circuit ▪ External power circuit
Allowable voltage on measuring terminals	up to 50 V
Ingress protection rating (according to EN 60529)	IP 54 (with lid closed)

POWER SUPPLY AND CONSUMPTION

Internal rechargeable battery	12 V, 9 A·h, lead-acid battery
Battery life	up to 6 h

PHYSICAL

Dimensions, H × W × D	178 × 366 × 271 mm
Weight	8 kg

LOW FREQUENCY GENERATORS

Portable and rack-mountable LFG-series generators are used in tracing systems standalone or as part of cable test vans for locating underground utility lines, pinpointing cable faults, and selecting the required cable from a bunch with an inductive method.

A wide range of operating frequencies allows for effective pairing of LFG generators with various receivers and tracers, while a powerful output signal and a wide range of special functions simplify the work with long cable lines or when operating in adverse location conditions.



LFG-50



LFG-200



LFG-2500



LFG series

■ LOW FREQUENCY GENERATORS ■

Portable and rack-mountable generators of the LFG series are used in route tracing systems as a source of a low frequency electrical signal when searching for power cable faults, tracing underground utility lines or selecting the required cable from a bundle with an inductive method.



LFG-50

■ Features

- Output power up to 50 V·A
- Multi-frequency and pulse modes
- Automatic load resistance matching
- Built-in transmission antenna
- Bright OLED display
- Built-in LED light



LFG-2500

■ Features

- Output power up to 2500 V·A
- Frequency modulation mode
- Automatic load resistance matching
- Bright OLED display



LFG-200

■ Features

- Output power up to 200 V·A
- Multi-frequency and pulse modes
- Automatic load resistance matching
- Integration with cable test vans
- Bright OLED display



	LFG-50	LFG-200	LFG-2500
SYSTEM PARAMETERS			
Sets of operating frequencies*	491 / 982 / 8440 Hz 480 / 1450 / 9820 Hz 526 / 1024 / 8928 Hz 1024 / 2048 / 9820 Hz		1024 Hz 1024 / 2048 Hz
Number of frequencies used simultaneously	1 ... 3		1
Frequency selection	Manual		
Modulation type	Amplitude		Frequency
Output power adjustment range	0 ... 50 V·A	0 ... 200 V·A	0 ... 2500 V·A
Operating modes	<ul style="list-style-type: none"> ▪ Continuous ▪ Pulse 		<ul style="list-style-type: none"> ▪ Constant frequency output signal ▪ Frequency-modulated output signal
Modulation (pulse) frequency	1 Hz		
Load resistance range within which the maximum output power may be achieved	0.5 ... 1000 Ω		0.5 ... 100 Ω
Load resistance matching	Automatic		
Maximum output open-circuit voltage	235 V _{RMS}	460 V _{RMS}	320 V _{RMS}
RANGES AND ACCURACIES OF THE OUTPUT PARAMETERS			
Output voltage	0.1 ... 240 V _{RMS}	0.1 ... 450 V _{RMS}	–
Output current	0.01 ... 9.9 A _{RMS}	0.01 ... 20 A _{RMS}	0.1 ... 50 A _{RMS}
Phase shift angle	0 ... 90°		–
Relative error of output voltage indication	5 %		–
Relative error of output current indication	5 %		
INTERFACES			
Display	Monochrome OLED		
Connection interfaces	USB-B (service only)		–
POWER SUPPLY AND CONSUMPTION			
Internal rechargeable battery	12 V, 10 A·h, LiFePO ₄		–
Battery life	over 1 h @ maximum output power		–
External power source voltage	10 ... 15 VDC		–
Current consumption when powered from external source (@ 12 VDC)	up to 8 A		–
Mains supply voltage	230 VAC, ± 10 %		
Mains supply frequency	50 / 60 Hz		
Power consumption when powered from mains supply	up to 100 V·A	up to 400 V·A	up to 3000 V·A
PHYSICAL			
Dimensions, H × W × D	266 × 366 × 270 mm	133 × 482 × 350 mm	241 × 415 × 327 mm
Weight	8 kg	8.3 kg	13 kg

* Sets of operating frequencies for LFG-50 and LFG-200 may be changed on the customer's request in the range of 100 ... 10000 Hz.

SURGE RECEIVERS AND CABLE LOCATORS

In tracing systems, consisting of a low frequency generator and a receiver, receivers and locators are used for pinpointing faults in underground power cables, tracing and determining the burial depth of hidden conductive communication lines, and identifying a specific cable in bunches. Tracers are also used for mapping the route of objects and may be effectively applied for surveying areas for hidden energised power lines. Multifunctional receivers are used for fault pinpointing with an acoustic method when used with surge generators, which are supplied as part of cable test vans or mobile fault location systems.

Our compact, lightweight, and functionally rich receivers are simple to operate and effective in the field.



P-900



PT-14





PT-14

■ CABLE AND PIPE LOCATOR ■

In conjunction with low frequency generators in tracing and fault location sets, the locator PT-14 is used as a receiver of inductive signals when tracing the route or determining the burial depth of underground utilities, pinpointing insulation faults in power cables, and identifying a correct cable from a bunch with an inductive method.

The PT-14 locator may also used autonomously (in passive mode) for locating energised communication lines using induced signals of various frequencies.



■ Features

- Active and passive operating modes
- Cable route, direction and burial depth detection
- GPS and Bluetooth
- Bright colour display
- Low weight and durability

SYSTEM PARAMETERS

Operating frequencies when used with a low frequency generator (active mode)	273 / 491 / 512 / 526 / 982 / 1024 / 2000 / 2048 / 8440 / 8928 / 9828 / 10000 / 32768 (33k) Hz
Operating frequencies when used standalone (passive mode)	25 / 50 / 60 / 100 / 300 / 550 / 1450 Hz
Dynamic range of input signals	up to 102 dB
Bandwidth for each operating frequency: <ul style="list-style-type: none">■ at minus 3 dB level■ at minus 60 dB level	up to 9 Hz up to 24 Hz
Burial depth detection range	0.10 ... 10.00 m
Operating frequency current detection range	10 mA ... 10.0 A
Burial depth detection accuracy for single extended direct communication line	$\pm (0.05 \cdot h + 0.1)$ m, where h – determined depth
Operating frequency voltage detection range in the "SENSOR" input	0.01 mV ... 1.70 V
Sensitivity of the "SENSOR" input at 6 dB signal-noise ratio	0.05 mV
Voltage detection accuracy	$\pm (0.03 \cdot U + 3 \text{ dgt})$ V, where U – determined voltage

POWER SUPPLY AND CONSUMPTION

Battery life	up to 5 h
Power consumption	up to 2 W

PHYSICAL

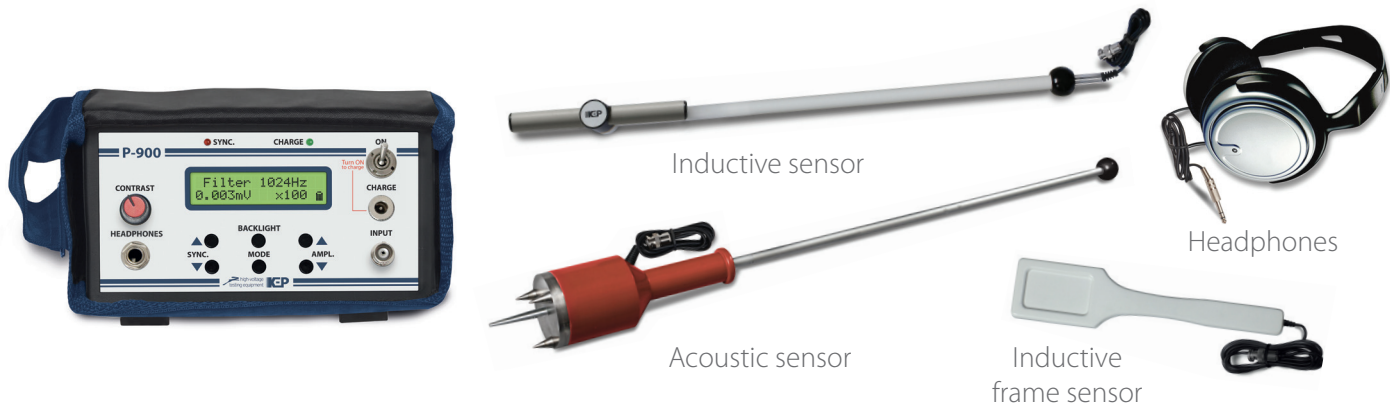
Dimensions, H × W × D	700 × 300 × 140 mm
Weight	1.8 kg



P-900

▪ MULTIFUNCTIONAL PINPOINTING RECEIVER ▪

The P-900 receiver is used in combination with surge generators for pinpointing faults in power cables with an acoustic method. The P-900 may also accompany low frequency generators in tracing and fault location sets for tracing, determining the burial depth of underground communication lines, identifying places of power cable faults as well as for selecting a cable from a bunch with an inductive method.



ACOUSTIC MODE

Range of operating frequencies	20 ... 2200 Hz
Detection and indication of EM pulse during surge generator discharge	Yes
Indication of the time difference between EM and acoustic signals	Yes

INDUCTIVE MODE

Operating frequencies	mode "1024 Hz"	1024 Hz ± 2 Hz
	mode "2048 Hz"	2048 Hz ± 2 Hz
Sensitivity	at maximum gain	20 μV
	at minimum gain	500 mV
Bandwidth at minus 3 dB level	mode "1024 Hz"	10 Hz
	mode "2048 Hz"	12 Hz
Types of detectable signals	<ul style="list-style-type: none"> ▪ Continuous ▪ Pulse 	

INTERFACES

Display	Monochrome, 2 lines, 20 characters each, with backlight
---------	---

SAFETY

Protection rating (according to EN 60529)	IP 50
---	-------

POWER SUPPLY AND CONSUMPTION

Internal rechargeable battery	6 V, 2500 mA·h
Battery life	up to 16 h

PHYSICAL

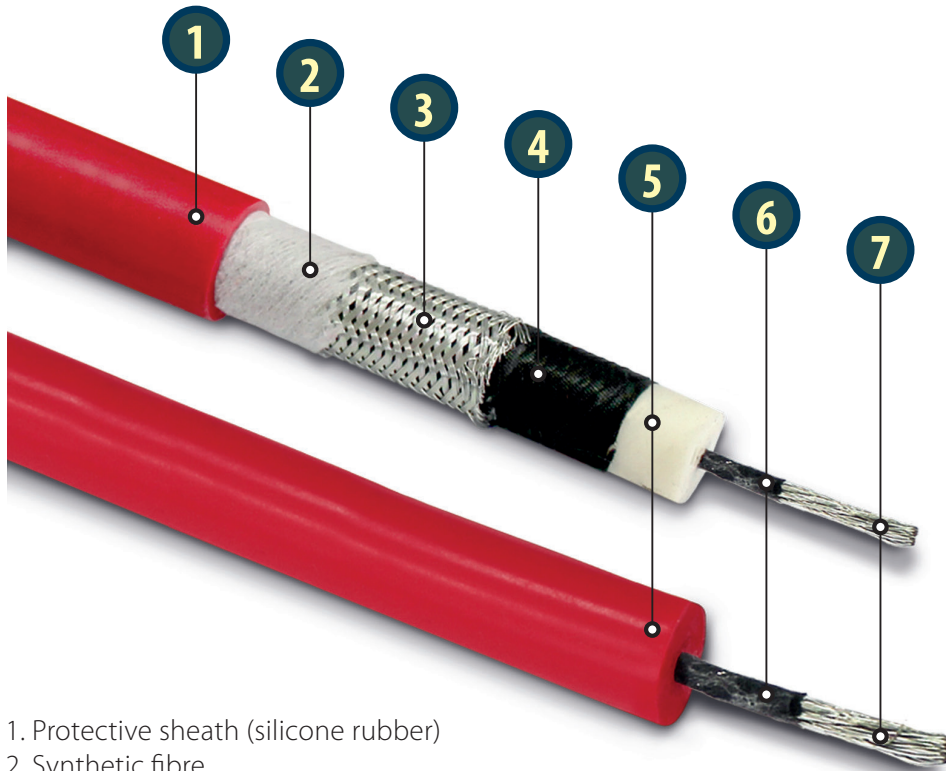
Base unit dimensions, H × W × D	72 × 179 × 102 mm
Base unit weight (without sensors)	0.64 kg



CABLES & WIRES

KEP-series high-voltage cables are a perfect solution for connecting high-voltage testing equipment to a variety of test objects.

KEP cables are supplied as part of our own equipment (ETL cable test vans, SWG mobile cable test and fault location systems, portable high-voltage VLF test systems, etc.).



1. Protective sheath (silicone rubber)
2. Synthetic fibre
3. Screen (tinned copper wire)
4. Semiconductive layer
5. Main insulation (silicone rubber)
6. Semiconductive layer
7. Core (flexible tinned copper wire)

KEP-70P	High-voltage wire, up to 50 kV AC, 1 × 4.0 mm ²
KEP-12t	High-voltage cable, up to 12 kV AC, 1 × 0.5 mm ²
KEP-12	High-voltage cable, up to 20 kV DC, 1 × 6.0 mm ²
KEP-70	High-voltage cable, up to 70 kV DC, 1 × 4.0 mm ²
KEP-40	High-voltage cable, up to 50 kV DC, 1 × 6.0 mm ²
KEP-32-4	High-voltage wire, up to 50 kV AC, 1 × 4.0 mm ²
KEP-32-1	High-voltage wire, up to 50 kV AC, 1 × 1.0 mm ²
KEP-4GCb	Operating grounding wire with black insulation, 1 × 4.0 mm ²
KEP-10Gct	Protective earthing wire with transparent insulation, 1 × 10.0 mm ²





AC/DC HIPOT TESTERS

High-voltage systems by KharkovEnergopribor Ltd. allow to quickly and safely conduct the testing of various types of electrical equipment and cables according to a multitude of standards.

One of the main advantages of our systems is an ability to output both DC and AC test voltages. Such universal approach provides our clients with a cost-efficient solution for conducting a wide range of testing using a single test system.

Our test systems provide consistent and accurate results, while the high level of operator safety is assured by all-round built-in protection mechanisms.

Systems equipped with a digital control allow to carry out tests in both fully automatic and manual control modes as well as store test results.

Our portable and mobile test systems are easy to use and well suited for both laboratory and field application.



HVT-70/50



HVTS-70/50



HVTS-HP





HVT series

■ PORTABLE HIGH-VOLTAGE TEST SYSTEMS ■

HVT-series systems are designed for high-voltage testing of solid dielectrics with low and medium electric capacitance (power cables, switchgear, busbars, insulators, etc.) with DC voltage up to 70 kV and high-voltage testing of other objects with AC voltage up to 50 kV_{RMS} at industrial frequency (f = 50 Hz).

HVT-70/50



■ Features

- DC & AC test modes
- Simple control
- Reliable pointer indication
- Safe two-module composition
- Built-in automatic grounding bar



HVTS-70/50



■ Features

- DC & AC test modes
- Graphic display and digital control
- Manual and automatic control modes
- Internal memory for test results storage
- Built-in automatic grounding bar



	HVT-70/50	HVTS-70/50
DC TESTING		
Output voltage adjustment and indication range	0 ... 70 kV	
Maximum output current	15 mA	
AC TESTING		
Output voltage adjustment and indication range	0...50 kV _{RMS}	
Maximum output current	40 mA _{RMS}	
Load capacitance @ rated output voltage	up to 1.6 nF	
SYSTEM PARAMETERS		
Control modes	Manual	Manual / Automatic
Indication	Analogue	Digital
POWER SUPPLY AND CONSUMPTION		
Mains supply voltage	230 VAC, ± 10 % (110 Hz option)	
Mains supply frequency	50 Hz (60 Hz option)	
PHYSICAL		
Control unit dimensions, H × W × D	265 × 349 × 240 mm	
Control unit weight	13 kg	
High-voltage unit dimensions, H × W × D	500 × 360 × 310 mm	
High-voltage unit weight	35 kg	

HVTS-HP series

■ MOBILE HIGH-POWER HIGH-VOLTAGE TEST SYSTEMS ■

The HVTS-HP-series systems are designed for high-voltage testing of various dielectrics with DC voltage (up to 140 kV) and AC voltage (up to 100 kV_{RMS}, f = 50 Hz) where a high testing current (up to 80 mA and 175 mA in DC and AC modes respectively) is required.



■ Features

- DC & AC test modes
- High power output
- Graphic display and digital control
- Manual and automatic control modes
- Internal memory for test report storage



	HVTS-HP 100/100-7.5 (17.5)	HVTS-HP 140/100-7.5 (17.5)
DC TESTING		
Output voltage adjustment and indication range	0 ... 100 kV	0 ... 140 kV
Maximum output current	40 (80) mA	30 (60) mA
AC TESTING		
Output voltage adjustment and indication range	0 ... 100 kV _{RMS}	
Maximum output current	75 (175) mA _{RMS}	
Load capacitance @ rated output voltage	up to 2.4 (5.4) nF	
SYSTEM PARAMETERS		
Control modes	Manual / Automatic	
Indication	Digital	
POWER SUPPLY AND CONSUMPTION		
Mains supply voltage	230 VAC, ± 10 %	
Mains supply frequency	50 Hz	
Power consumption	up to 9 (19) kV•A	
Current consumption	up to 40 (82) A	
PHYSICAL		
Control unit dimensions, H × W × D	1063 × 735 × 561 mm	
Control unit weight	82 (127) kg	
High-voltage unit dimensions, H × W × D	1012 × 639 × 750 mm	
High-voltage unit weight	125 kg	

VLF TESTERS

Subjecting cross-linked polyethylene (XLPE) cables to DC testing leads to the formation of residual capacitive charges (space charges) which may damage healthy insulation. Very low frequency (VLF) testing provides a non-destructive alternative and thus is a preferable approach to testing polymer-insulated cables.

Our multifunctional VLF-60 system allows to perform VLF testing of high-capacitance XLPE-insulated cables, conduct DC- and DC+ withstand testing of various solid dielectrics, carry out initial burning of faulty cable insulation, test vacuum circuit breakers as well as test and pinpoint cable sheath faults (with a suitable receiver).

VLF-60 can run tests in either a fully automatic mode according to IEEE 400.2-2013 or in a manual mode according to a wide range of standards, while the control is realised via a touch-sensitive colour display.



VLF-60





VLF-60

■ PORTABLE HIGH-VOLTAGE VLF TESTER ■

Portable system VLF-60 is used for VLF (0.1 Hz) withstand testing of cables with polymeric (PE, XLPE, TRXLPE, EPR, etc.) insulation, DC+ and DC- hipot testing of various electrical equipment (generators, transformers, switchgear, etc.), vacuum circuit breakers testing as well as cable sheath testing and fault pinpointing.

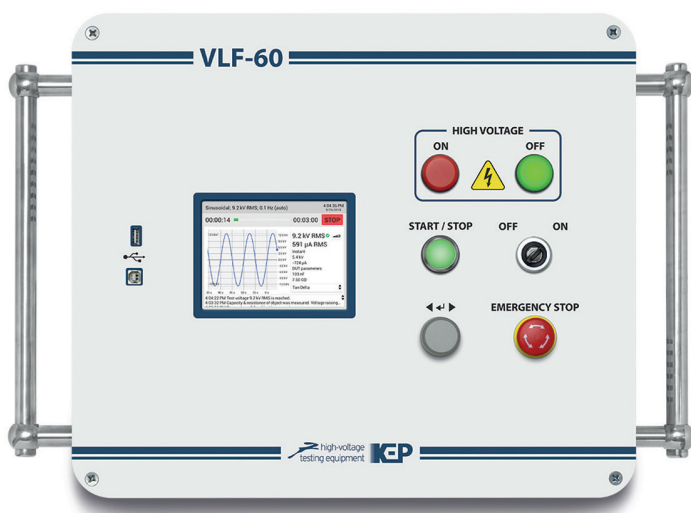


■ Features

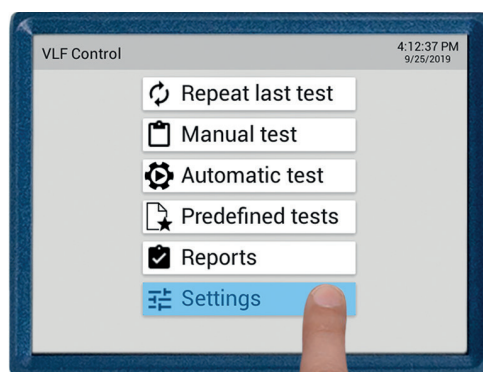
- VLF withstand testing according to IEEE 400.2-2013
- VLF sinewave, VLF squarewave, DC+ and DC- voltage waveform output
- Up to 10 μ F load capacitance testing
- Cable sheath testing and fault pinpointing
- Manual & automatic test cycles
- Colour LCD with touch screen control

34

■ HIGH-VOLTAGE TESTERS ■



Control panel



Touch control



OUTPUT VOLTAGE AND CURRENT

	Voltage	Current
▪ Sinewave	0.1 ... 62 kV _{PEAK} (44 kV _{RMS})	0.1 ... 40 mA _{PEAK} (26 mA _{RMS})
▪ Bi-polar pulse	0.1 ... 62 kV _{PEAK}	0.1 ... 40 mA _{PEAK}
▪ DC+	+ (0.1 ... 60) kV	+ (0.1 ... 40) mA
▪ DC-	minus (0.1 ... 60) kV	minus (0.1 ... 40) mA
▪ Vacuum bottle test	minus (0.1 ... 60) kV	minus (1 ... 1000) µA
▪ Sheath test	minus (0.1 ... 10) kV	minus (0.1 ... 40) mA
▪ Sheath fault location	+ (0.1 ... 10) kV	+ (0.1 ... 40) mA
Setting and indication resolution	0.1 kV	1 µA, 0.1 mA
Relative indication accuracy	± [2 % + 2 dgt]	
Indication	Real time voltage wave visualisation	
Output frequency (sinewave, bi-polar pulse)	0.01 ... 0.1 Hz, resolution 0.01 Hz	
Frequency selection	<ul style="list-style-type: none"> ▪ Automatic ▪ Manual 	

SYSTEM PARAMETERS

Output power	up to 1200 W
Breakdown management	<ul style="list-style-type: none"> ▪ Burn on arc (keep arc burning) ▪ Trip out on arc (current limit trip)

INDICATION

- Voltage
- Current
- Object under test capacitance
- Object under test resistance

OBJECT UNDER TEST

Load capacitance range	0.1 nF ... 12 µF
Load resistance range	10 kΩ ... 20 GΩ
Maximum load	<ul style="list-style-type: none"> ▪ 1.0 µF at 0.1 Hz, 44 kV_{RMS} (3 km for a typical cable with capacitance 330 pF/m) ▪ 5.0 µF at 0.02 Hz, 44 kV_{RMS} (15 km for a typical cable with capacitance 330 pF/m) ▪ 10.0 µF at 0.01 Hz, 44 kV_{RMS} (30 km for a typical cable with capacitance 330 pF/m)
Duty cycle	Continuous, unlimited

CONTROLS AND INTERFACES

Connection interfaces	<ul style="list-style-type: none"> ▪ USB-A (user memory stick) ▪ USB-B (service only) ▪ RS-485 (service only)
Display	5.7" colour TFT, 640 × 480 px, capacitive multi-touch
Internal memory	10,000 test reports

POWER SUPPLY AND CONSUMPTION

Mains supply voltage	110 ... 230 VAC, ± 10 %
Mains supply frequency	50 / 60 Hz

PHYSICAL

Dimensions, H × W × D	528 × 577 × 408 mm
Weight	64 kg

ELECTRICAL PROTECTIVE EQUIPMENT TEST SYSTEMS

Additional safety during electrical works is achieved through the reliable insulation of hand tools and personal protective equipment.

The CBC family of test systems from KharkovEnergoPribor Ltd. are designed for rapid and quality assessment of dielectric strength of a wide range of objects, including dielectric gloves, footwear, hand tools with insulated handles, voltage indicators, discharge rods, etc.

The test cycle of the CBC-C-series is automated: the supply, stabilisation and control of the test voltage is carried out automatically, while the filling and drainage of the test bath is done by an electric pump.

All CBC-family systems feature a remote-control unit and all-round auxiliary protection mechanisms for maximum operator safety.



CBC-12C



CBC-C



CBC-M



CBC-M series

■ ELECTRICAL PROTECTIVE EQUIPMENT TEST SYSTEMS ■

The CBC-M-series systems are designed for acceptance and operational high-voltage testing of personal electrical protective equipment used in electrical installations.



The CBC-M-series systems are supplied with a set of accessories that allow to test a wide range of objects:

- Dielectric gloves
- Dielectric boots and shoes
- Hand tools with insulated handles (screwdrivers, wire cutters, pliers, etc.)
- Voltage indicators

The systems can be used without a test bath for general purpose high-voltage AC testing of various solid dielectrics.

Withstand tests are carried out with AC voltage up to 50 kV_{RMS} (up to 100 kV_{RMS} for CBC-100M) at industrial frequency (f = 50 Hz).

		CBC-50M	CBC-100M
TEST MODES AND PARAMETERS			
"100 V"	Output voltage	10 ... 100 V _{RMS}	
	Number of simultaneously testable objects	1	
"3 kV"	Output voltage	0.3 ... 3 kV _{RMS}	
	Leakage current threshold	7.6 mA	
"15 kV"	Number of simultaneously testable objects	up to 4	
	Output voltage	1.5 ... 15 kV _{RMS}	
"50 kV"	Leakage current threshold	7.6 mA	
	Number of simultaneously testable objects	up to 4	
"100 kV"	Output voltage	5 ... 50 kV _{RMS}	–
	Leakage current threshold	10 mA	–
	Number of simultaneously testable objects	1	–
"100 kV"	Output voltage	–	10 ... 100 kV _{RMS}
	Leakage current threshold	–	10 mA
	Number of simultaneously testable objects	–	1
Relative error of current and voltage indication		± 3 %	
SAFETY			
Protection		<ul style="list-style-type: none"> ■ Built-in automatic grounding bar ■ Overcurrent ■ Thermal overload warning ■ Low internal gas pressure warning ■ EMERGENCY STOP button 	
POWER SUPPLY AND CONSUMPTION			
Mains supply voltage		230 VAC, ± 10 %	
Mains supply frequency		50 Hz (60 Hz option)	
Power consumption		up to 0.9 kV•A	up to 1.5 kV•A

CBC-C series

■ AUTOMATIC ELECTRICAL PROTECTIVE EQUIPMENT TEST SYSTEMS ■

Automatic CBC-C-series systems are designed for testing personal protective equipment used in electrical installations with an AC voltage up to $50 \text{ kV}_{\text{RMS}}$ (up to $100 \text{ kV}_{\text{RMS}}$ for CBC-100C) at industrial frequency ($f = 50 \text{ Hz}$).



Application, stabilisation and control of the output voltage is done automatically according to the pre-set parameters. Filling and drainage of the test bath is carried out automatically with an aid of an electric pump.

The value of the leakage current is displayed on the LCD throughout the entire test cycle for each of the four available channels.

The CBC-C-series testers have five pre-programmed and one user-defined output voltage levels.

		CBC-50C	CBC-100C
TEST MODES AND PARAMETERS			
"Neon lamp, 100 V"	Output voltage	20 ... 100 V_{RMS}	
"Test bath, 15kV"		1 ... 15 kV_{RMS}	
"BVI-50"		10 ... 50 kV_{RMS}	
"BVI-100"		–	10 ... 100 kV_{RMS}
Relative error of current and voltage indication		± 3 % of full range	
Leakage current threshold		7.6 mA	10 mA
Number of simultaneously testable objects		up to 4	
SAFETY			
Protection		<ul style="list-style-type: none"> ■ Built-in automatic grounding bar ■ Overcurrent ■ Thermal overload warning ■ Low internal gas pressure warning ■ EMERGENCY STOP button 	
POWER SUPPLY AND CONSUMPTION			
Mains supply voltage		230 VAC, ± 10 %	
Mains supply frequency		50 Hz (60 Hz option)	
Power consumption		up to 0.9 $\text{kV}\cdot\text{A}$	up to 1.5 $\text{kV}\cdot\text{A}$

CBC-12C

■ AUTOMATED ELECTRICAL INSULATING GLOVES TESTER ■

Automated system CBC-12C is designed for electrical withstand testing of rubber insulating gloves with an AC voltage of $10 \text{ kV}_{\text{RMS}}$ at industrial frequency ($f = 50 \text{ Hz}$). In addition, the system allows to test neon lamps.

The control and test progress monitoring are carried out from the remote control unit while test objects are submerged in the bath with a built-in high voltage source.



■ Features

- Simultaneous testing of up to 12 gloves
- Automated test cycle
- Digital control
- Safe two-module composition



TEST PARAMETERS

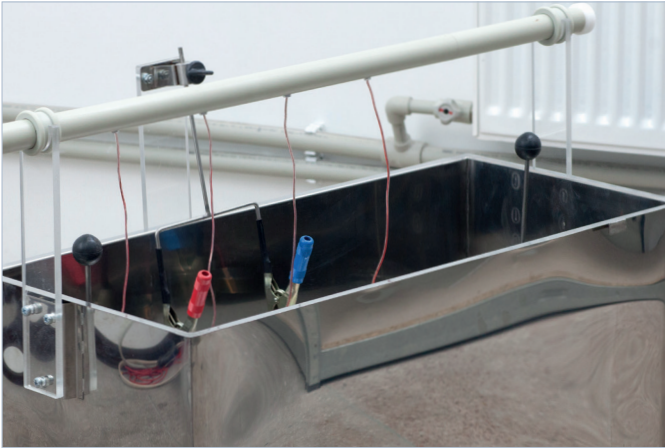
Output voltage	1 ... $10 \text{ kV}_{\text{RMS}}$
Relative error of voltage indication	$\pm 3 \%$ of full range
Number of simultaneously testable gloves	up to 12

POWER SUPPLY AND CONSUMPTION

Mains supply voltage	230 VAC, $\pm 10 \%$
Mains supply frequency	50 Hz
Power consumption	up to $1.5 \text{ kV}\cdot\text{A}$

PHYSICAL

Control unit dimensions, H x W x D	316 x 187 x 132 mm
Control unit weight	3 kg
Bath dimensions, H x W x D	1100 x 1815 x 745 mm
Bath weight	258 kg



Testing hand tools in CBC-M-series bath



Testing dielectric gloves in CBC-C-series bath



Testing dielectric gloves in CBC-12C bath

■ Functional comparison of CBC testers

	CBC-M	CBC-C	CBC-12C
Automatic filling and drainage of the test bath with water	✗	✓	✓
Automatic voltage ramp up/down	✗	✓	✓
Indication of the breakdown voltage and leakage current	✗	✓	✓
Swivel-lever mechanism of test objects fastening	✗	✓	✓
Graphic display	✗	✓	✓
Dielectric gloves testing	✓	✓	✓
Dielectric boots, shoes and voltage indicators testing	✓	✓	✗

CIRCUIT BREAKER TESTERS

Mobile UPA-series systems from KharkovEnergoPribor Ltd. are used for testing the trip functionality and time-current characteristics of circuit breakers with thermal and electromagnetic tripping units.

These systems allow to supply high current to a circuit breaker under test for very short periods of time. Pairing UPA systems with an external voltage regulator makes it possible to obtain a sinusoidal output current which guarantees highly accurate results of time-current characteristics testing of overcurrent protection devices.



UPA-1 / UPA-3



UPA-6 / UPA-10



UPA-16 / UPA-20



UPA series

■ CIRCUIT BREAKER TEST SYSTEMS ■

Mobile UPA-series systems are designed for testing tripping characteristics of the magnetic and thermal-magnetic circuit breakers used in the AC circuits of industrial frequency.

Particularly, UPA-series systems may be used for testing time-current characteristics of the circuit breakers according to IEC 60898-1:2019 or IEC 60934:2019 (when used with an external voltage regulator).



UPA-6 / UPA-10



UPA-1 / UPA-3



UPA-16 / UPA-20



Current source

■ Features

- Output current up to 20 kA
- Time-current characteristics testing according to IEC 60898-1:2019 or IEC 60934:2019
- Continuous and time-limited current generation
- Versatile loop-through current source
- Safe two-module composition
- Mobile form factor



		UPA-1	UPA-3	UPA-6	UPA-10	UPA-16	UPA-20
OUTPUT CURRENT							
Maximum value		1 kA	3 kA	6 kA	10 kA	16 kA	20 kA
Current measurement ranges in amperes	one turn	10 ... 100 A	100 ... 1000 A			200 ... 4000 A	
	two turns	5 ... 50 A	50 ... 500 A			100 ... 2000 A	
	three turns	3.3 ... 33 A	33 ... 330 A			66.7 ... 1333 A	
	four turns	2.5 ... 25 A	25 ... 250 A			50 ... 1000 A	
	five turns	2 ... 20 A	20 ... 200 A			40 ... 800 A	
Current measurement ranges in kiloamperes	one turn	0.1 ... 1 kA	1 ... 3 kA	1 ... 6 kA	1 ... 10 kA	3 ... 16 kA	3 ... 20 kA
	two turns	0.05 ... 0.5 kA	0.5 ... 1.5 kA	0.5 ... 3 kA	0.5 ... 5 kA	1.5 ... 8 kA	1.5 ... 10 kA
	three turns	0.03 ... 0.33 kA	0.33 ... 1 kA	0.33 ... 2 kA	0.33 ... 3.3 kA	1 ... 5.33 kA	1 ... 6.67 kA
	four turns	0.025 ... 0.25 kA	0.25 ... 0.75 kA	0.25 ... 1.5 kA	0.25 ... 2.5 kA	0.75 ... 4 kA	0.75 ... 5 kA
	five turns	0.02 ... 0.2 kA	0.2 ... 0.6 kA	0.2 ... 1.2 kA	0.2 ... 2 kA	0.6 ... 3.2 kA	0.6 ... 4 kA
Measurement error (of maximum value in a given range)		± 3 %					
SYSTEM PARAMETERS							
Current generation cycles		<ul style="list-style-type: none"> Continuous (up to 7200 s) Time-limited (50 / 100 / 200 / 400 / 600 / 800 / 990 ms, 10 s) 					
Ranges of test duration measurement		<ul style="list-style-type: none"> 50 ... 990 ms 1 ... 7200 s 					
Absolute test duration measurement error in 50 ... 990 ms range		± 20 ms					
Relative test duration measurement error in 1 ... 7200 s range		± 3 %					
Open-circuit voltage (with one current conductor turn and 220 V voltage supply to the current source)		0.9 V		1.2 V		0.9 V	
SAFETY							
Protection		<ul style="list-style-type: none"> Protective earthing Overcurrent Overheating 					
POWER SUPPLY AND CONSUMPTION							
Mains supply voltage		230 VAC, ± 10 %					
Mains supply frequency		50 Hz (60 Hz option)					
Power consumption		up to 3.6 kV·A	up to 7.5 kV·A	up to 20 kV·A	up to 37 kV·A	up to 50 kV·A	

External voltage regulators suitable for UPA systems

VT-20A (20 A)	UPA-1 UPA-3
VT-80A (80 A)	UPA-6 UPA-10
VT-120A (120 A)	UPA-16 UPA-20



OIL BREAKDOWN TESTERS

Portable OLT-series testers are used for determining the dielectric strength of mineral and synthetic insulating oils. Our testers determine the oil breakdown voltage (BDV) in a fully automatic mode and feature a built-in printer for printing out test results. The testers are also equipped with the means of stirring and determining the temperature of the oil sample which ensures compliance with the requirements of the majority of the national and international oil testing standards. Proprietary KEP Suite software allows to create custom user standards with a high degree of flexibility. OLT testers provide high accuracy and stability of the obtained breakdown voltage values and feature a comprehensive operator protection during high-voltage tests.

To simplify the procedure of calibration and adjustment of the OLT-series oil testers, we have developed a special C-series reference voltage measurement cell with a bright LED display. The cells C-80 and C-100 are equipped with an infrared port for wireless connection to a PC. This allows an operator to remain at a safe distance from a high voltage source while using the proprietary KEP Suite software aids quick and efficient adjustment of the cell itself.



OLT-80



OLT-100



C-80



C-100





OLT series

■ AUTOMATIC INSULATING OIL DIELECTRIC STRENGTH TESTERS ■

Portable automatic OLT-series testers are designed for dielectric strength testing of insulating oils (mineral and synthetic) with AC industrial frequency voltage.



OLT-80

■ Features

- Test voltage up to 80 kV
- Automatic test cycle
- Support of wide selection of standards (IEC 60156:1995, GOST 6581-75, etc.)
- Highly accurate results
- Integrated printer, stirrer and temperature sensor
- Test report storage and exporting to PC
- Portability and low weight



OLT-100

■ Features

- Test voltage up to 100 kV
- Automatic test cycle
- Support of wide selection of standards (IEC 60156:1995, GOST 6581-75, etc.)
- Highly accurate results
- Integrated printer, stirrer and temperature sensor
- Test report storage and exporting to PC
- Portability and low weight

48

■ INSULATING OIL TESTERS ■

	OLT-80	OLT-100
TEST PARAMETERS		
Breakdown voltage determining and indication range	20 ... 80 kV	20 ... 100 kV
Relative breakdown voltage determining error	± 3 %	
Output voltage frequency	50 / 60 Hz	
Switch off time on breakdown	< 5 μs	
Oil sample temperature determining and indication range	minus 55 ... + 125 °C	
PHYSICAL		
Dimensions, H × W × D	278 × 461 × 274 mm	312 × 555 × 312 mm
Weight	21 kg	32 kg



C series

■ REFERENCE VOLTAGE MEASUREMENT CELL ■

Cells C-80 and C-100 are used as reference voltage meters during calibration and adjustment of the OLT-series testers.



Cell C-80 in a case

Cell C-80 in OLT tester

	C-80	C-100
MEASUREMENT PARAMETERS		
Measured and indicated parameters	<ul style="list-style-type: none"> ■ Voltage ■ Frequency ■ Crest factor 	
Voltage measurement range	10 ... 80 kV _{RMS}	10 ... 100 kV _{RMS}
Relative voltage measurement error	± 1 %	
Voltage indication resolution	0.01 kV	
Frequency measurement range	45 ... 65 Hz	
Frequency indication resolution	0.01 Hz	
Crest factor indication resolution	0.01	
SYSTEM PARAMETERS		
Input resistance	800 MΩ	900 MΩ
INTERFACES		
Display	2 segments, 4 characters each	
Connection interfaces	IrDA port (PC connection)	
POWER SUPPLY AND CONSUMPTION		
Internal rechargeable battery	3.7 V, LiPo	
Battery life	up to 4 h	
PHYSICAL		
Compatible electrode spacing	221 mm	273 mm



OIL DIELECTRIC DISSIPATION FACTOR METERS

During the normal operation, the insulating oil may get contaminated with colloidal impurities, organometallic compounds, particles of solid insulation and various aging by-products. The degree of contamination of liquid dielectrics can be determined by the value of its dissipation factor ($\tan \delta$ or tangent delta), while the dependency of the dissipation factor on the temperature of the liquid can help identify the type of such contaminants.

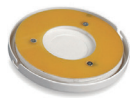
High-accuracy TANGENT-3M testers from KharkovEnergoPribor Ltd. are used for automated measurement of dissipation factor of insulating oils according to IEC 60247:2004. We have designed our testers with a built-in memory for the measurement results storage, PC-connection capability, and robust operator safety systems for all-round operator protection.

50

■ INSULATING OIL TESTERS ■



TANGENT-3M



YAOI-3



YAPI-3



TANGENT-3M

■ AUTOMATIC INSULATING OIL DISSIPATION FACTOR METER ■



TANGENT-3M is designed for measuring the dielectric dissipation factor ($\tan \delta$) of insulating oils at industrial frequency ($f = 50 \text{ Hz}$) according to IEC 60247:2004. The measurements are taken in an automated test cycle which includes cell calibration and oil sample heating.

In addition to the dielectric dissipation factor, TANGENT-3M determines the temperature, absolute permittivity, and electrical capacitance of the oil sample.

■ Features

- Automated test cycle
- Test report storage and exporting to PC
- High accuracy and rate of measurement
- Compact design

DISSIPATION FACTOR (TANGENT DELTA) MEASUREMENT PARAMETERS

Measurement range	0.0001 ... 1.0
Absolute measurement error	$\pm (0.01 \cdot \tan \delta + 0.0002)$, where $\tan \delta$ – measured value of the dissipation factor
Measurement resolution	0.00001
Measurement time, including cell calibration and oil sample heating to 90 °C (with measurement at 70 / 80 / 90 °C)	up to 35 min
Measurement time, including cell calibration and oil sample heating to 90 °C (with measurement at 70 / 80 / 90 °C) and cooling (with measurement at 90 / 80 / 70 °C)	up to 85 min

ELECTRICAL CAPACITANCE DETERMINING PARAMETERS

Determining range	5 ... 50 pF
Determining error	$\pm (\tan \delta + 0.5) \%$

SYSTEM PARAMETERS

AC voltage applied to the test cell	2000 V _{RMS}
Relative voltage measurement error	$\pm 2.5 \%$
Heating temperature of the oil sample in the cell	up to 90 °C
Absolute temperature determining error	$\pm 1 \text{ °C}$
Test cell volume	12 cm ³ \pm 1 cm ³

POWER SUPPLY AND CONSUMPTION

Mains supply voltage	230 VAC, $\pm 10 \%$
Mains supply frequency	50 / 60 Hz
Power consumption	up to 0.3 kV·A

PHYSICAL

Dimensions, H x W x D	90 x 405 x 260 mm
Weight	5 kg



YAOI-3

■ REFERENCE TEST CELL ■



Reference cell YAOI-3 is used as a working measurement standard during the calibration of the automatic insulating oil dissipation factor meter TANGENT-3M.

Sealed case made of high-quality stainless steel is highly resistant to corrosion and reliably protects the internal components of YAOI-3 against external influences. This ensures a long-term stability of the reference values the cell provides.



YAPI-3

■ THREE-TERMINAL TEST CELL ■



The test cell YAPI-3 is used as a vessel for holding the oil sample in the automatic tester TANGENT-3M during the measurement of the dielectric dissipation factor ($\tan \delta$).

The cell electrodes are made of high-quality corrosion-resistant stainless steel.

The electrodes are reliably isolated from the external environment with an insulating disk made of low porosity PTFE.



RESONANT TESTERS

UIG-series systems from KharkovEnergoPribor Ltd. are successfully used by customers in the energy generation sector internationally (Ukraine, Russia, Belarus, and Tajikistan). UIG-series testers can be used in both industrial and field conditions for DC and AC high-voltage testing. All our resonant test systems are built to order in accordance with current standards and customer's requirements.

Additionally, our resonant test systems feature high quality factor (Q-factor), are compact, and equipped with touch-control interface.



UIG-35/70/80-250





UIG series

■ RESONANT TESTERS ■

UIG-series resonant testers are designed for high-voltage testing of high-capacitance objects such as generator stator windings, busbars, cables etc. The testing can be performed with either a DC (rectified) or an AC voltage at industrial frequency, in automatic or semi-automatic modes.

All UIG resonant testers are built to order according to customer's specifications.



■ Features

- AC test voltage up to $50 \text{ kV}_{\text{RMS}}$ in generator stator windings test mode
- AC test voltage up to $80 \text{ kV}_{\text{RMS}}$ in busbar test mode
- DC test voltage up to 100 kV in leakage current measurement mode
- Power consumption up to 45 kV·A
- Output power up to 1500 kV·A
- Ability to test objects with up to $6 \mu\text{F}$ capacitance
- High quality factor (Q-factor)

■ Completed projects

Model	Power, kV·A	Test object capacitance, μF	Operating site
UIG-25/50/70-180	180	0.2 ... 0.8	Ust-Khantayka HPP, Russia
UI-15/225	225	0.01 ... 6 (at 7.5 kV)	ZAO Beltelecabel, Belarus
UIG-35/70/80-250	250	0.2 ... 0.6	Zatonskaya TPP, Russia
UIG-35/70/80-250	250	0.2 ... 0.6	Shaturskaya GRES, Russia
UIG-35/70/80-250	250	0.2 ... 0.6	Shaturskaya GRES, Russia
UIG-35/50/70-315	315	0.2 ... 0.8	Dniester PSPP, Ukraine
UIG-35/400	400	0.2 ... 1	Boguchansk HPP, Russia
UIG-50-500	500	0.15 ... 0.7	Rogunsk HPP, Tajikistan
UIG-60/60/80-500	500	0.2 ... 0.8	Protech Power Ltd. , Ukraine
UIG-40/80/100-500	500	0.25 ... 0.94	JSC Atomtechenergo, Russia
UIG-30/60/85-700	700	0.5 ... 2.5	Volga HPP, Russia
UIG-35/70/100-750	750	0.3 ... 1.5	Sayano-Shushenskaya HPP, Russia
UIG-35/70/100-800	800	0.3 ... 1.8	Krasnoyarsk HPP, Russia
UIG-30/60/85-900	900	0.7 ... 2.8	Volga HPP, Russia
UIG-35/70/100-1400	1400	0.01 ... 1.5	Sayano-Shushenskaya HPP, Russia





UIG resonant tester is used at Krasnoyarsk HPP in Russia



DISTRIBUTORS



BELARUS

PROFTEAM

Belarus
220014, Minsk,
Praspyekt Zhukava 44, office 516, 517

+375 1 7227 7272
info@profteam.by
www.profteam.by



BRAZIL

PROELETIC COMERCIO
E SERVIÇOS

Brazil
Rua Piauí, 345 SL 702 - BH – MG

+55 3 7 3214 3538
n.martins@proeleticbh.com.br
www.proeleticbh.com.br



CHINA

PD TECHNOLOGIES

Hong Kong
Kin Ho Industrial Bldg.,
14 Au Pui Wan Street,
Block 1, Flat F, 16/F., Fotan, Shatin

+852 3695 0998
info@pdtech.com.hk
www.pdtech.com.hk



COLOMBIA

COMULSA SAS

Colombia
Calle 11 No. 3-58, Piso 6,
Oficina 607. Edificio Citi, Cali

+57 2489 4532
gmora@comulsa.com
www.comulsa.com



ECUADOR

ESPECIALISTAS EN
SUBESTACIONES EMS
TESTING CIA

Ecuador
Suasnavas, Sabanilla Oe4-519 y Prensa, 303,
Cotocollao, Quito, 170301

+593 222 9225
operaciones@emsecuador.com
www.emsecuador.com



EGYPT

ENGINEERING TRADE
OFFICE

Egypt
6, Abd El Kawy Ahmed Str.,
El Mohandseen,
Cairo, 12411

+20 12 2215 5311
eto@electroeto.com
www.electroeto.com



FINLAND

YLEISELEKTRONIIKKA OYJ
YE INTERNATIONAL

Finland
6, Luomannotko, Espoo, 73,
FI-02201

+358 1 0289 1220
sales@yeint.fi
www.yeint.fi



FRANCE

EURO-TESTS

France
1, Impasse Claude Chardon,
Saint-Marcellin, 38160

+33 04 7636 5003
dufour.francois@euro-tests.com
www.euro-tests.com



INDIA

ASIAN CONTEC LTD

India
Asian Centre, B-28, Okhla Industrial Area,
Phase-1, New Delhi

+91 11 4186 0000
sales@stanlay.com



INDONESIA

**PT. SINERGI SINAR
ABADI**

Indonesia
27, Jl. Raya Ciperna Blok Karanganyar RT
003 RW 005 Str., Jawa Barat province,
Kabupaten Cirebon, Desa Ciperna, 45171

+62 21 8498 3383
pramantaa@yahoo.co.id
www.sinergisinarabadi.com



KAZAKHSTAN

ENERGOSKAN

Kazakhstan
010000, Nur-Sultan,
Bauyrzhan Momyshuly Avenue, 2/8, N.P.1

+7 71 7278 3427
astana@energoskan.ru
www.energoskan.ru



KOREA

SAM YOUNG SU

Republic of Korea
101- #809, 36, Bucheon-ro 198 beon-gil,
Bucheon-si, Gyeonggi-do, 14557

+82 3 2324 2231
ycchoi@samyongsu.co.kr
www.sy-tech.co.kr



PERU

KAPEK INTERNACIONAL

Peru
577, Urb. Federico Barreto Str.,
Montecarmelo, La Victoria, Lima

+51 9 5463 8695
info@kapekinternacional.com
www.kapekinternacional.com

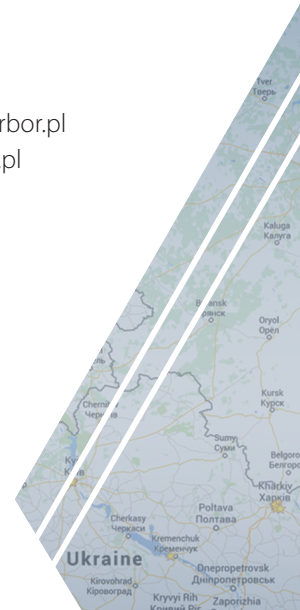


POLAND

POWER-ARBOR

Poland
6, Ciasna, Warsaw, 00-232

+48 6 9349 1444
j.parciak@power-arbor.pl
www.power-arbor.pl



DISTRIBUTORS



RUSSIAN FEDERATION

ALFA-ENERGY

Russia
125171, Moscow,
1-Ya Radiatorskaya Ulitsa, 3

+7 495 505 7670
 info@alfaen.ru
 www.alfaen.ru

NPP TOCHPRIBOR

Russia
346421, Novocherkassk,
Slavyanskiy pereulok, 4b

+7 863 333 2346
 mail@tochpribor.org
 www.npp-tp.ru

ELECTRONPRIBOR

Russia,
141195, Fryazino,
Ulitsa Prudy Barskiye, 1, office 4

+7 495 249 9111
 info@1ep.ru
 www.electronpribor.ru

ENERGOSKAN

Russia
105523, Moscow,
Shcholkovskoye Shosse, 100,
room 108, office 211

+7 495 268 0290
 msk@energосkan.ru
 www.energосkan.ru

ENERGOSKAN

Russia
620014, Yekaterinburg,
Ulitsa Sheynkmana, 9, office 204

+7 343 318 0152
 ekb@energосkan.ru
 www.energосkan.ru



SPAIN

DENVER METROLOGÍA ELECTRÓNICA S.L.

Spain
Avenida Manzanares, 68, Madrid,
28019

+34 9 1569 8006
 info@denver.es
 www.denver.es



TAIWAN

ING-JING PRECISE INDUSTRIAL CORPORATION

Taiwan
9F-5, No.5, Sec.3, New Taipei Blvd.,
Xinzhuang Dist., New Taipei City 242032

+886 2 7730 1998
 yinjin@yinjin.com.tw
 www.yinjin.com.tw



TURKEY

ELZ ENERJI

Turkey
3, Eryaman Mah. 304. Sok. Str., Etimesgut
Dist, Ankara, 06824

+90 31 2354 7030
 info@elzenerji.com.tr
 www.elzenerji.com.tr

UNITED ARAB EMIRATES

POWER ARBOR GULF

United Arab Emirates
9, Al Ain Str., Makeen Tower, Tourist Club
Area, Abu Dhabi

+971 2644 4575
info@elzenerji.com.tr
www.powerarborgulf.com

VIETNAM

HA LONG INSPECTION AND TECHNICAL SERVICE

Vietnam
2, Quarter 46, Nguyen Khanh Toan Str.,
Quan Hoa Ward, Cau Giay Dist., Hanoi,
70000

+84 4 3537 8919
ldhung@haintec.com
www.haintec.vn

VIETNAM ELECTRICAL ENGINEERING

Vietnam
153, Lane 69A, Hoang Van Thai Str., Khuong
Mai Ward, Thanh Xuan Dist, Hanoi

+84 9 8938 5765
planning@veejsc.vn
www.veejsc.vn

EMIN VIETNAM

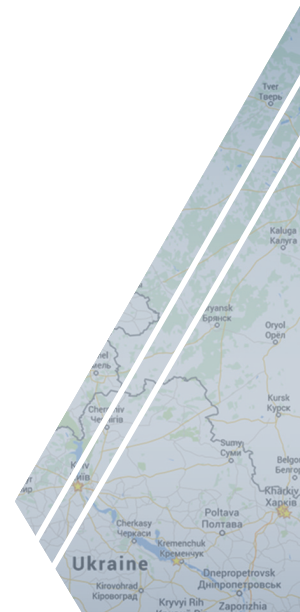
Vietnam
No 8A Hoang Cau Moi Street, Trung Liet
Ward, Dong Da District, Hanoi 100000

+84 9 0449 5511
hn@emin.vn
www.emin.vn

PACIFIC TECHNOLOGY AND EQUIPMENT

Vietnam
69/1A Truong Van Hai Str., Tang Nhon Phu B
Ward, Dist 9, Ho Chi Minh

+84 9 4208 6802
sales@patek.com.vn
www.patek.com.vn



KHARKOVENERGOPRIBOR LTD.

9, Generala Momota Str.,
Kharkiv, Ukraine, 61075



+38 (057) 393-20-28



+38 (057) 393-10-69



info@kephv.com



www.kephv.com



Product specifications are subject to change without notice. Pictures are for illustration purposes only.